

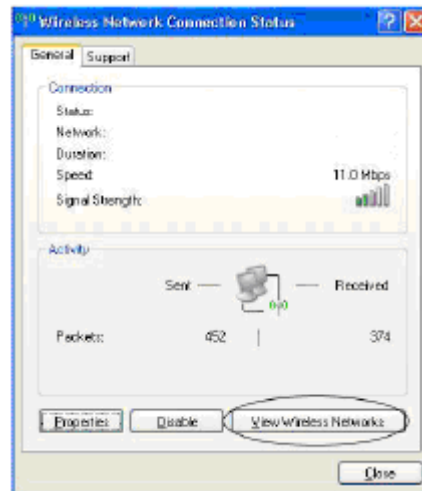
Connect to the Internet Wirelessly-Windows XP

Installation Instructions

Requirements

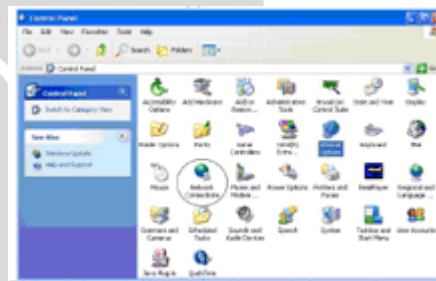
In order to connect to the Apogee wireless network, you will need a standard wireless network interface card. If your computer does not come with one already installed, they are available for purchase at most major electronics stores or the Campus Bookstore

- In the bottom-right corner of the screen, by the clock, find your wireless network icon.
- Place the mouse over it. If it says Wireless Network Connection, double-click on it.
- Select the **View Wireless Networks** button on the right side of the window.
- Select the Apogee wireless network from the list of available networks and click the Connect button in the bottom-right corner of the window.
- Open up a web browser (usually Internet Explorer or Mozilla)
- Enter your username and password
 - Press the “Login” button. You are now connected.

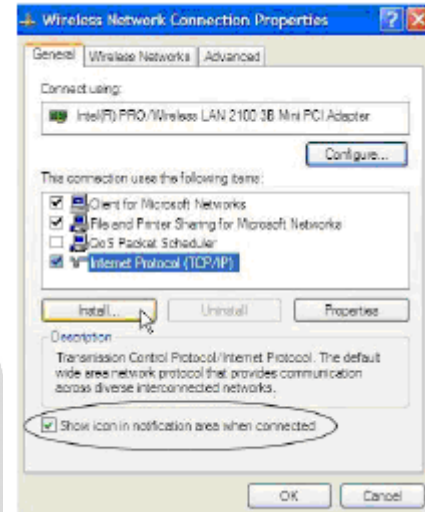


If the Wireless Network Connection icon is not in the System Tray

- Make sure your computer has a wireless network card installed.
- Click on the Start menu and select Control Panel.
- Double-click on the Network Connections icon.
- Right-click on the Wireless Network Connection and select Properties.



- In the properties pane, make sure the checkbox in the bottom-left corner is checked.
- Click OK.
- The Wireless Network Connection icon will appear by the clock.
- Follow the “Getting Connected” directions above.



Frequently Asked Questions

For other questions or assistance, contact Apogee at 1-877-276-4339

The UIW ResNet web site is maintained by [Terence Peak](#), Coordinator of Technology Training.

